

Fig. 1.1 • Normal skin from hair-bearing area. Hematoxylin and eosin (H&E) stain.

products from our skin, and are vital for fluid balance, skin sensation, and proper skin immune responses. They also integrate the skin into very complex neuro-endocrine-immune networks essential for the organism's survival.

All organisms must have an outer covering that interacts with the environment, helping them to survive multiple exogenous threats while maintaining their structural integrity, be it the cell membrane of an amoeba or the skin of a human. Potential

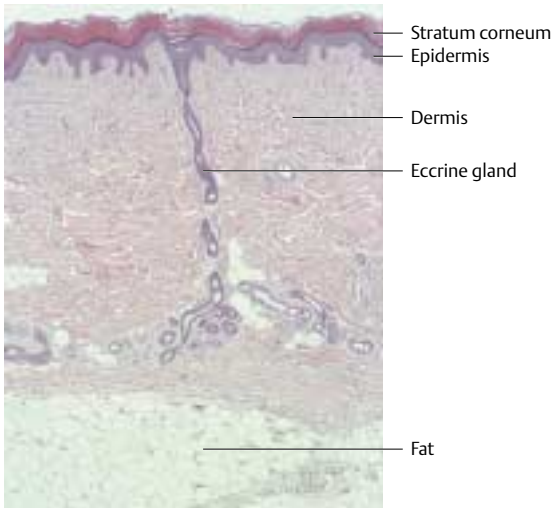


Fig. 1.2 • Normal skin from palm. H&E stain.

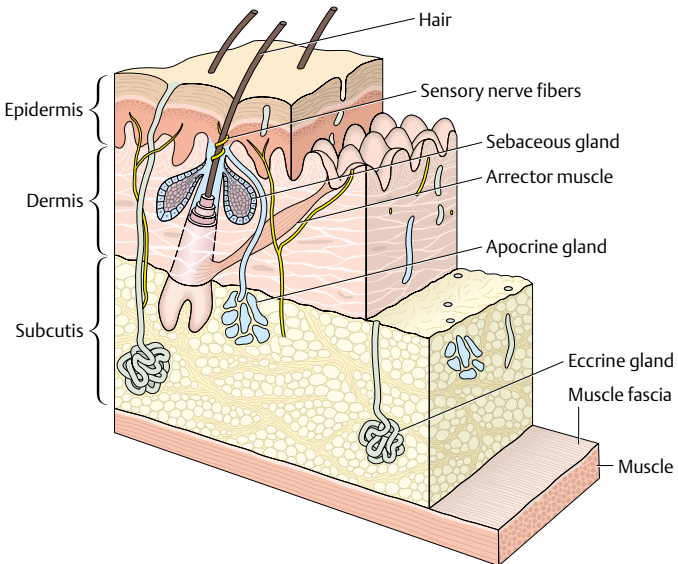


Fig. 1.3 • Three-dimensional diagram of skin. Note how epidermis and dermis interdigitate.